

Service Manual

Notebook Computer

CF-27

Simplified

TOUGHBOOK

Model Number Reference

The following models are numbered in accordance with the types of CPU, LCD and HDD etc. featured by product.

Model No. CF-271 2 3 4 QC5

1: CPU type

L: for Intel® Mobile Pentium® III Processor 500 MHz

2: LCD type

B: for 12.1" TFT Color

3: HDD type

E: for 20 GB

4: RAM size

K: for 128 MB

5: Area

M: for U.S.A.

WARNING

This service information is designed for experienced repair technicians only and is not designed for use by the general public. It does not contain warnings or cautions to advise non-technical individuals of potential dangers in attempting to service a product. Products powered by electricity should be serviced or repaired only by experienced professional technicians. Any attempt to service or repair the product or products dealt with in this service information by anyone else could result in serious injury or death.

Panasonic®

© 2001 Matsushita Electric Industrial Co., Ltd. All rights reserved. Unauthorized copying and distribution is a violation of law.

WARNINGS

For U.K.

FOR YOUR SAFETY PLEASE READ THE FOLLOWING TEXT CAREFULLY

This appliance is supplied with a moulded three pin mains plug for your safety and convenience. A 3 amp fuse is fitted in this plug.

Should the fuse need to be replaced please ensure that the replacement fuse has a rating of 3 amps and that it is approved by ASTA or BSI to BS 1362.

Check for the ASTA mark  or the BSI mark  on the body of the fuse.

If the plug contains a removable fuse cover you must ensure that it is refitted when the fuse is replaced.

If you lose the fuse cover the plug must not be used until a replacement cover is obtained.

A replacement fuse cover can be purchased from your local Panasonic Dealer.

IF THE FITTED MOULDED PLUG IS UNSUITABLE FOR THE SOCKET OUTLET IN YOUR HOME THEN THE FUSE SHOULD BE REMOVED AND THE PLUG CUT OFF AND DISPOSED OF SAFELY. THERE IS A DANGER OF SEVERE ELECTRICAL SHOCK IF THE CUT OFF PLUG IS INSERTED INTO ANY 13 AMP SOCKET.

If a new plug is to be fitted please observe the wiring code as shown below.

If in any doubt please consult a qualified electrician.

Important

The wires in this mains lead are coloured in accordance with the following code:

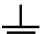
Blue: Neutral

Brown: Live

As the colours of the wires in the mains lead of this apparatus may not correspond with the coloured markings identifying the terminals in your plug, proceed as follows:

The wire which is coloured Blue must be connected to the terminal which is marked with the letter N or coloured BLACK.

The wire which is coloured Brown must be connected to the terminal which is marked with the letter L or coloured RED.

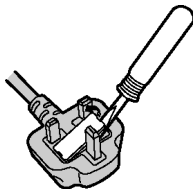
Under no circumstances should either of these wires be connected to the earth terminal of the three pin plug, marked with the letter E or the Earth Symbol  .

The mains plug on this equipment must be used to disconnect the mains power.

Please ensure that a socket outlet is available near the equipment and shall be easily accessible.

■ How to replace the fuse

Open the fuse compartment with a screw-driver and replace the fuse.



Warnings

● This equipment is not designed for connection to an IT power system.

(An IT system is a system having no direct connections between live parts and Earth; the exposed-conductive-parts of the electrical installation are earthed.)

An IT system is not permitted where the computer is directly connected to public supply systems in the U.K.)

● Disconnect the mains plug from the supply socket when the computer is not in use.

This equipment is produced to BS800/1983.

LASER SAFETY INFORMATION

For U.S.A.

Class 1 LASER-Product

This product is certified to comply with DHHS Rules 21 CFR Subchapter J.

This product complies with European Standard EN60825 (or IEC Publication 825)

For all areas

This equipment is classified as a class 1 level LASER product and there is no hazardous LASER radiation.

Caution:

- (1) Use of controls or adjustments or performance of procedures other than those specified herein may result in hazardous radiation exposure.
- (2) The drive is designed to be incorporated into a computer-based system or unit which has an enclosing cover. It should never be used as a stand alone drive.

Danger:

The serviceman should not remove the cover of drive unit and should not service because the drive unit is a non-serviceable part.

Please check DANGER label on PD-drive unit.

- Unplug the AC power cord to the equipment before opening the top cover of the drive.
- When the power switch it on, do not place your eyes close to the front panel door to look into the interior of the unit.

LASER Specification

Class 1 level LASER Product

Wave Length:	DVD	658 ± 8 nm
	CD	775~815 nm

Laser safety information is appropriate only when drive with laser is installed.

LITHIUM BATTERY ⚠

• CAUTION

Danger of explosion if battery is incorrectly replaced.

Replace only with the same or equivalent type recommended by the equipment manufacture.

Discard used batteries according to the manufacturer's instructions.

LITHIUMBATTERIES ⚠

Vorsicht!

Explosionsgefahr bei unsachgemäßem Austausch der Batterie. Ersatz nur durch denselben oder einen vom Hersteller empfohlenen ähnlichen Typ. Entsorgung gebrauchter Batterien nach Angaben des Herstellers.

PILE AU LITHIUM ⚠

ATTENTION: IL Y A DANGER D'EXPLOSION S' IL Y A REMPLACEMENT INCORRECT DE LA PILE. REMPLACER UNIQUEMENT AVEC UNE PILE DU MÊME TYPE OU D'UN TYPE RECOMMANDÉ PAR LE CONSTRUCTEUR. METTRE AU RÉBUT LES PILES USAGÉES CONFORMÉMENT AUX INSTRUCTIONS DU FABRICANT.

Main PCB (DL3U11102BAA) for CF-27LBEKQCM


1. CF-27LBEKQCM is installed by a memory 128 MB (SDRAM) on the Main PCB.
2. The following table shows the parts number of the Main PCB and the Memory Chip compared with CF-27LBAGHEM.
3. A schematic diagrams and a printed circuit board are same as CF-27LBAGHEM without below parts.
(Refer to the service manual of an order No. CPD0008005A1)



REF. NO. and AREA	PART NO'		DESCRIPTION	Q'TY
	CF-27LBAGHEM	CF-27LBEKQCM		
E1	DL3U11102AAA	DL3U11102BAA	PCB, MAIN	1
Main PCB				
IC 35 37 39 41	C3ABQG000008	-----	IC, SDRAM (on board 64 MB)	4->0
IC 35 37 39 41 80 81 82 83	-----	C3ABQG000025	IC, SDRAM (on board 128 MB)	0->8

Replacement Parts List

(CF-27LBEKQCM)

Note: Important Safety Notice

Components identified by  mark have special characteristics important for safety. When replacing any of these components, use only manufacturer's specified parts.

REF. NO. and AREA	PART NO.	DESCRIPTION	Q'TY
Main Block Unit			
E1	 DL3U11102BAA	PCB, MAIN	RTL 1
E2	DL3U21102BAA	PCB, KEYBOARD	RTL 1
E3	DL3U51102BAA	PCB, PARALLEL SERIAL	RTL 1
E4	DL3U41102BAA	PCB, LED	RTL 1
E5	DL3U61102BAA	PCB, IrDA	RTL 1
E6	DFWV48C0527	ASS'Y, LCD/INVERTER FPC	1
E7	 ECXF6314G	PCB, INVERTER	1
E9	DFJE50M100B	FPC, KEYBOARD	1
E10	DFJE20M103B	FPC, LED	1
E11	DFJE9075YA	FPC, TOUCH PAD	1
E12	DFWV48C0518	ASS'Y, HDD FPC (A)	1
E13	 N3CABPD00002	HDD	1
E14	DFWV99A0037	HDD MOUNTING KIT	1
E14-1	DLUP0137A03A	FPC, HDD (B)	1
E14-2	DFMD2111YA	CLAMP, HDD (A)	1
E14-3	DFMD2112YA	CLAMP, HDD (B)	1
E14-4	DFHG1153ZA	DAMPER, HDD (A)	1
E14-5	DFHE5025XA	SCREW	3
E14-6	DFHR7522WA	DAMPER, HDD (B)	1
E14-7	DFHR5509ZA	TAB, HDD	1
E15	DFWV44K0066	ASS'Y, FDD	RTL 1
E15-1	 DFJG065ZA-T	FDD	1
E15-2	DFJE9077ZA	FPC, FDD	1
E15-3	DL3U30956AAA	PCB, FDD CONNECTOR	RTL 1
E15-4	DFWV84F0075	ASS'Y CABINET, FDD	1
E15-5	DFMD7339ZA	CHASSIS, FDD	1
E15-6	DFMD7340ZA	CLAMP, FDD	2
E15-7	DFMD7445YA	CLAMP, FDD CONNECTOR PCB	1
E15-8	DFMC0407ZA	CONDUCTIVE CUSHION, FDD	2
E15-9	XTB2+6GFZ	SCREW	1
E15-10	XTB26+8GFZ	SCREW	4
E15-11	DFHE5076YA	SCREW	4
E15-12	DFGL0018ZC-3	DECORATION, LED	1
E15-13	DFGX0179XA-0	FDD BACK PANEL	1
E15-14	DFHR4050ZA	TUBE, LED	1
E15-15	DFHR5440YA	GUIDE, FDD CONNECTOR	1
E15-16	DFHR7490ZB	SHEET, FDD	1
E15-17	DFHR8297ZB	DAMPER, FDD	2
E16	DFJL0033ZA	TOUCH PAD	1
E17	DFWV26A0028	ASS'Y SPEAKER	1
E18	DL3DE0144BAA	LCD UNIT	1
E19	DFSX1A87XATR	KEYBOARD	1
E20	DFJP140ZA136	SLOT, PC CARD	1
E21	DFWV84A0184	ASS'Y, TOUCH SCREEN PANEL	1
E21-1	DFMX0698ZA	FPC, FIXING TAPE	1
E22	DFWP0120ZB	PCB, TOUCH SCREEN PANEL	1
E24	DLUP0137A01G	FPC, INVERTER PCB	1
E25	DFWV27F0001	ASS'Y, MIC	1
E26	DL3U11073BAB	PCB, MODEM	1

E27		DL3U21073BAB	PCB, RJ11	1
E28		DL3UP1075AAA	PCB, TESTER FPC	1
E30		DFWP0125WA	MODEM	1
E31		DFJS579XA	CABLE, MODEM	1
E35		DFWP0098ZA	PCB, WIRELESS	1
E36		DFWP0129ZB	WIRELESS MODULE	1
E37		DFJS402ZA	SOCKET	1
E38		DFJE9106ZA	FPC	1
E39		DFWV48C0550	ASS'Y, MODEM CONNECTOR FPC	1
E39-1		DLUP0144A01B	PCB, MODEM CONNECTOR	1
E39-2		DFMD7627ZA	RJ11 FIXING METAL	1
E39-3		DFHG1335ZA	RUBBER (A), MODULAR CONNECTOR WATERPROOF	1
E39-4		DFHG1336ZA	SHEET, MODULAR CONNECTOR WATERPROOF	1
E39-5		DFHG1340ZA	RUBBER (B), MODULAR CONNECTOR WATERPROOF	1
E39-6		DFHR5565ZA	MODULAR CONNECTOR HOUSING	1
E39-7		DFHR7780ZA	INSULATION SHEET	1
E39-8		XTB2+4GFZ	SCREW	1
Accessories				
A1	▲	DFQX2810ZC	OPERATING INSTRUCTION MANUAL	1
A2	▲	DFJA0047ZAKK	AC CABLE	1
A3		DFKH1009XA	HANDLE BELT	1
A4	▲	DFWV95F0005	ASS'Y BATTERY PACK	1
A5		CF-AA1639AM1	AC ADAPTOR	1
A6		DFHS9010ZA	WIPE CLOTH, LCD	1
A7		DFKH1009XA	BELT	1
Packing Material				
P1		DFPK0968XA	CASE, PACKING	1
P2		DFPN0682YA	CUSHION	1
Mechanical Parts				
K1		DFWV80A0272	ASS'Y, CABINET, TOP	1
K1-1		DFWV43F0025	ASS'Y, LEAD SW	1
K1-2		DFBD0089YA-0	LEVER, COVER LOCK	2
K1-3		DFUW0079ZA	SPRING	2
K1-4		DFMX0383YA	SHEET	1
K1-5		XQN2+CG4FZ	SCREW	4
K1-6		DFMD4018ZA	CLAMP, COVER LOCK	2
K2		DFKF8125VD-0	ASS'Y CABINET, BOTTOM	1
K2-1		DFKF0178WB-0	BOTTOM CABINET	1
K2-2		DFHR5435ZA	LEVER, FDD (MP) EJECT	1
K2-3		DFUW0064ZA	SPRING	1
K2-4		DFMY3004ZA	CLAMP, HEAT PIPE (A)	1
K2-5		DFMY3005ZA	CLAMP, HEAT PIPE (B)	1
K2-12		DFBH1080YA	HINGE, COVER	6
K2-13		XYN2+F4	SCREW	4
K2-14		XYN26+J6FZ	SCREW	2
K2-16		DFWV84F0073	ASS'Y, COVER, PC CARD SLOT	1
K2-17		DFWV70A0106	ASS'Y, POWER BUTTON	1
K2-18		DFHE5025YA	SCREW	16
K2-19		DFUE0021ZA	SPRING	2
K2-20		DFHR5434ZA	LEVER, COVER LOCK	2
K2-21		DFHR5438ZA	LEVER, COVER LOCK	1
K2-22		DFHR5439ZA	LEVER, COVER LOCK	1
K2-23		DFHG1148ZA	RUBBER, MP EJECT LEVER	2
K2-24		DFHG1339YA	RUBBER, CONNECTOR COVER	1
K2-25		DFGX0194YA-0	COVER, DC-IN JACK	1
K2-27		DFGL0068ZB	IrDA SHEET	1
K2-28		DFKE0428YA-0	COVER, CONNECTOR	1

K2-29	DFHE5025XA	SCREW	2
K2-30	DFKE0439ZA-0	DOOR, CONNECTOR	1
K2-31	DFMD2109ZB	WATERPROOF METAL	1
K2-32	DFHG1130ZA	RUBBER, CONNECTOR DOOR	1
K2-33	DFMY9008XA	UNIT, HEAT PIPE	1
K2-34	DFMY9009YA	UNIT, VGA HEAT PIPE	1
K2-42	DFHR7787ZA	RUBBER	2
K2-50	DFKE9041ZA-0	ASS'Y, COVER, FDD (MP)	1
K2-50-1	DFKE0429XA-0	COVER, FDD (MP)	1
K2-50-2	DFHE5025YA	SCREW	2
K2-50-3	DFHR7783ZA	RUBBER	1
K2-50-4	DFHR7808ZA	RUBBER	1
K2-50-5	DFMD2129ZA	MP COVER METAL	1
K2-50-6	DFHG1138ZA	CUSHION, FDD (MP)	1
K2-50-7	DFKE0523ZA	DOOR, FDD (MP) COVER	1
K2-50-8	DFHR7807ZB	RUBBER	1
K3	DFWV80A0266	ASS'Y, LCD FRONT CABINET/TOUCH SCREEN PANEL	1
K4	DFWV80C0421	ASS'Y, LCD REAR CABINET	1
K5	DFWV82A0120	ASS'Y, COVER, HDD/BATTERY	1
K5-1	DFHG344ZA	RUBBER, FOOT	2
K7	DFHR7515YA	NET, SPACER	1
K8	DFHG344ZA	RUBBER, FOOT	2
K9	DFWV82A0113	ASS'Y, COVER, KEYBOARD FPC	1
K10	DFWV82A0119	ASS'Y, COVER, LCD/INVERTER FPC	1
K13	DFHG1133ZA	RUBBER, LCD	1
K14	DFHG1165ZA	RUBBER, LCD (D)	1
K15	DFBH1078ZA	HINGE, LCD (LEFT)	1
K16	DFBH1079ZA	HINGE, LCD (RIGHT)	1
K17	DFMD3078ZA	CLAMP, LCD (A)	1
K18	DFMD3079ZA	CLAMP, LCD (B)	1
K19	DFMD3080ZA	CLAMP, LCD (.C)	1
K20	DFMD3081YA	CLAMP, LCD (D)	1
K22	DFMX0687YA	SHEET, INSULATION, INVERTER PCB	1
K23	DFMX0383ZA	SHEET	2
K24	DFBS0041ZB-0	LATCH, LCD	1
K25	DFUW0082ZA	SPRING	1
K26	DFHG1012ZA-1	SPACER, RUBBER	2
K27	DFGB0070ZA-0	LOGO BADGE (B)	1
K28	DFHR7813ZA	SHEET, CABLE PROTECTION	1
K29	DFHR7800ZA	PACKING A, HDD	1
K30	DFUW0079ZA	SPRING	1
K31	DFHR7801ZA	PACKING B, HDD	1
K32	DFMD7437ZA	CLAMP, TOUCH PAD	1
K35	DFHR7802ZA	PACKING A, BATTERY	1
K42	DFHR7803ZA	PACKING B, BATTERY	1
K45	DFHE0378ZA	GASKET	1
K47	DFMD7439YA	CLAMP, IrDA PCB	1
K48	DFBD0088ZA-0	LEVER, COVER LOCK	1
K49	DFHE0379ZA	CONDUCTIVE SHEET, ANTENNA	1
K54	DFKE0434YB-0	COVER, CENTER	1
K55	DFGT0789YA	RATING LABEL	1
K56	DFKH1004ZB-0	HANDLE	1
K57	DFGB0082ZA-0	LOGO BADGE (B)	1
K61	DFMX0783ZA	SHEET, INSULATION, DIMM	1
K62	DFHE0151ZA	CONDUCTIVE CUSHION	1
K71	DFMX0768ZA	SHEET, INSULATION, TOUCH SCREEN PANEL PCB	1
K73	DFMY0210ZA	RUBBER, CPU RADIATION	1

K74	DFMY3042ZA	CPU HOLDING METAL	1
K77	DFQT9666ZA	SEAL, TOUGHBOOK	1
K78	DFMD7440ZA	JACK REINFORCEMENT METAL	1
K79	DFMD7578ZA	BATTERY CONNECTOR REINFORCEMENT METAL	1
K80	DFMY0256ZA	RUBBER, VGA RADIATION	1
K81	DFMY0208ZA	RUBBER, CPU RADIATION (B)	1
K82	DFMY0209ZA	RUBBER, CPU RADIATION (C)	1
K88	DFMD1130ZB	BELT HOOK (RIGHT)	1
K89	DFMD1131ZB	BELT HOOK (LEFT)	1
K90	DFMD2122ZA	MODEM PCB FIXING METAL	1
K92	DFMX0383WA	SHEET	1
K93	DFMX0772ZA	INSULATION SHEET MODEM PCB	2
K94	DFMX0773ZA	INSULATION SHEET (B), MODEM PCB	1
K95	DFMX0778ZA	INSULATION SHEET (C), MODEM PCB	3
K99	DFHM0216ZA	SPACER, MODEM PCB	2
K100	DFHM0218ZA	BELT RING	2
K103	DFHR5570ZA	PCB PROTECTION COVER	1
K106	DFHR7659ZA	MIC WATERPROOF SHEET C	1
K108	DFMX0788ZA	INSULATION SHEET, LCD	1
K109	DFHG1353ZA	HOLDING METAL DAMPER	1
K110	DFHG1354ZA	HOLDING METAL DAMPER	1
K113	DFHG1357ZA	LCD DAMPER	1
K114	DFHG1358ZA	LCD DAMPER	1
K115	DFHE0354ZA	LCD CONDUCTIVE CLOTH	1
K117	DFQT9718ZA	LABEL, MODEM	1
K118	DFMD3088YA	TESTER CONNECTOR HOLDING METAL	1
K119	DFHR7436XA	SHEET, PC CARD SLOT	1
K120	DFMX0778ZA	INSULATION SHEET	1
K121	DFMX0784ZA	MODEM PCB ANTI-SLIP TAPE	1
K122	DFHM0219ZA	MODEM PCB FIXING SHAFT	1
K140	DFHE0377ZA	CONDUCTIVE SHEET, ANTENNA CABLE	2
K143	DFHG425XA	RUBBER, SPACER	1
K148	DFMC0647ZA	CONDUCTIVE SHEET, CPU	1
K151	DL3MA0144CAA	ASS'Y ANTENNA	1
K152	DFHE0417ZA	GASKET, JACK	2
K161	DFMD7637YA	METAL	1
K162	DFMX0383WA	SHEET	1
K163	DFMX0772ZA	INSULATION SHEET	1
K166	DFMX0779ZA	INSULATION SHEET	1
K167	DFMX0784ZA	SHEET	1
K169	DFHR1059YA	SHEET	2
K171	DFHG1375ZA	FIXING, ANTENNA CONNECTOR	1
K175	DFHP7089YA	BILATERAL TAPE	1
K183	DFHR5780ZA	HOLDER, ANTENNA	1
K185	DFHE0376ZA	GASKET	2
K186	DFHR5797YA	SHEET, CABLE PROTECTION	1
K187	DFHR7871ZA	SPACER, HDD AIR HOLE	1
K190	DFHE0365ZA	CONDUCTIVE CLOTH	1
K201	DFHE5093ZA	SCREW	12
K202	DFHE5064YA	SCREW	10
K204	DFHE5082ZA	SCREW	11
K206	DFHE5025YA	SCREW	4
K208	XYN3+J6FN	SCREW	1
K209	XYN3+J8FN	SCREW	5
K211	DFHE5058ZA	SCREW	4
K212	XTB3+8G	SCREW	4
K213	XTB3+10GFZ	SCREW	7

K214	DFHE0159ZA	SCREW	2
K215	DFHE5025XA	SCREW	7
K216	DFHE5023ZA	SCREW	2
K217	DFHE5086ZA	SCREW	3
K218	DFHE5086ZA	SCREW	1
K219	XWC3BFN	WASHER	2
K220	DFUQ0081ZA	SPRING	2
K221	DFHE5118ZA	SCREW	2
K222	DFHE5104ZA	SCREW	9
K223	XYN3+C6FZ	SCREW	1
K224	XYN26+J5FZ	SCREW	3
K225	XYN3+J12FN	SCREW	2
K228	DFHE5023WA	SCREW	6
K229	XYN2+J6FZ	SCREW	2
K230	N1AAB1000002	ELEMENT, ANTENNA	1
K231	XSB26+4FZ	SCREW	1
K300	DFHE0474ZA	CONDUCTIVE CLOTH	1
K301	DFMX0795ZA	TAPE	1

Electrical Replacement Parts List

(CF-27LBKQCM)

REF.NO	PART NO.	DESCRIPTION	Q'TY
Main PCB			
BT1	DFWV95F0002	ASS'Y RTC BATTERY	1
C 6 41 43 56 79 86 87 88 89 114 143 211 311 319 332 381 382 470 503	DCUJ1A105ZFL	CAPACITOR, 10V, 1 μ F	19
C 8 9 12 14 20 21 29 38 42 52 53 58 59 60 63 67 68 69 71 73 74 75 76 92 95 105 107 113 115 116 117 118 120 122 124 125 126 128 129 130 132 133 134 135 141 142 145 146 186 187 188 189 190 191 192 193 195 196 197 198 200 212 213 214 218 221 222 226 241 242 243 244 248 256 276 277 278 279 280 281 282 285 286 287 288 307 312 313 360 363 364 366 367 369 370 372 387 389 396 409 430 435 436 444 445 447 449 452 454 488 490 491 492 513 522	ECUV1C104ZFV	CAPACITOR, 16V, 0.1 μ F	115
C 40 62 104 119 121 131 207 209 247 249 289 290 291 292 293 336 337 338 339 354 355 356 362 365 395 426 506 520	ECUV1C104ZFV	CAPACITOR, 16V, 0.1 μ F	28
C 54 66 94 96	EEFCD0D101R	CAPACITOR, 2V, 100pF	4
C 65	ECUV1H100DCV	CAPACITOR, 50V, 10pF	1
C 70 72 77 154 235 236 237 310 323 327 391 401 402 403 404 434 439 489	ECUV1H103KBV	CAPACITOR, 50V, 0.01 μ F	18
C 78 80 144 201 202 210 240 250 253 268 272 283 284 294 295 340 368 397 405 406 407 408 505	DCUE1A106ZFL	CAPACITOR, 10V, 10 μ F	23
C 81 155 322	DCUA0J475MBY	CAPACITOR, 6.3V, 4.7 μ F	3
C 84 85 90 91 309	DCUJ1A105ZFL	CAPACITOR, 10V, 1 μ F	5
C 97 99	ECST0JX476R	CAPACITOR, 6.3V, 47 μ F	2
C 98	DCS1AN336CE	CAPACITOR, 10V, 33 μ F	1
C 100	DCS1AP107DE	CAPACITOR, 10V, 100 μ F	1
C 106 179 180 208 308 335 357 371 398 419	DCUE1A106ZFL	CAPACITOR, 10V, 10 μ F	10
C 109 111 194 331 379 380 455	ECUV1C105ZFX	CAPACITOR, 16V, 1 μ F	7
C 110 112 216	ECUV1C105ZFX	CAPACITOR, 16V, 1 μ F	3
C 123	ECUV1H222KBV	CAPACITOR, 50V, 2200pF	1
C 127	DCUK1E106ZFL	CAPACITOR, 25V, 10 μ F	1
C 137 325 328	DCUC0J106KBY	CAPACITOR, 6.3V, 10 μ F	3
C 139 178 321 330	DCUE1C106MBY	CAPACITOR, 16V, 10 μ F	4
C 140	ECUV1H330JCV	CAPACITOR, 50V, 33pF	1
C 156	ECUV1H680JCV	CAPACITOR, 50V, 68pF	1
C 160 515	ECUV1H470JCV	CAPACITOR, 50V, 47pF	2
C 177 185 482	EEFCD0D101R	CAPACITOR, 2V, 100 μ F	3

C 181 254 298 304 306 314 457	ECUV1C224ZFV	CAPACITOR, 16V, 0.22 μ F	7
C 182 183	ECUV1H180JCV	CAPACITOR, 50V, 18pF	2
C 184 273 297 299 305 374 378 385 411 412 437 453 512	ECUV1H102JCV	CAPACITOR, 50V, 1000pF	13
C 203 204 205 206	ECUV1H470JCV	CAPACITOR, 50V, 47pF	4
C 245 251 252 259 269 270 271 274 275 315 316 317 329 359 469	ECUV1E104ZFV	CAPACITOR, 25V, 0.1 μ F	15
C 246 296	ECUV1H102JCV	CAPACITOR, 50V, 1000pF	2
C 262 267	ECUV1H050DCV	CAPACITOR, 50V, 5pF	2
C 318	DCS1ATA101M	CAPACITOR, 10V, 100 μ F	1
C 320 326	EEFCD0J470R	CAPACITOR, 6.3V, 47 μ F	2
C 324	DCS0JTA151M	CAPACITOR, 6.3V, 150 μ F	1
C 333 334	ECUV1H080DCV	CAPACITOR, 50V, 8pF	2
C350 351	ECUV1H470JCV	CAPACITOR, 50V, 47pF	
C 361 416 417 418 502 504	ECUV1C224ZFV	CAPACITOR, 16V, 0.22 μ F	6
C 373 383 384 388 390 392 393 394 423 424 450 471 498 499 500 501	ECUVH101JCV	CAPACITOR, 50V, 100pF	16
C 414	ECUV1H472KBV	CAPACITOR, 50V, 4700pF	1
C 420 421	ECUV1H101JCV	CAPACITOR, 50V, 100pF	2
C 427 428	EEVHA0J470R	CAPACITOR, 6.3V, 47 μ F	2
C 429	DCS1AP107DE	CAPACITOR, 10V, 100 μ F	1
C 431	DCUK1A226ZFL	CAPACITOR, 10V, 22 μ F	1
C 432 433	ECUV1E104ZFV	CAPACITOR, 25V, 0.1 μ F	2
C 438	EEVFC1C101P	CAPACITOR, 16V, 100 μ F	1
C 440 442	ECUV1H121JCV	CAPACITOR, 50V, 120pF	2
C 441 448	DCUK1E685ZFL	CAPACITOR, 25V, 6.8 μ F	2
C 443 451	ECUV1H472KBV	CAPACITOR, 50V, 4700pF	2
C 458	ECUV1H151JCV	CAPACITOR, 50V, 150pF	1
C 460	ECUV1H150JCV	CAPACITOR, 50V, 15pF	1
C 472 473	DCUC0J106KBY	CAPACITOR, 6.3V, 10 μ F	2
C 507	ECST1AX226R	CAPACITOR, 10V, 22 μ F	1
C 523 524 525 526 527 528 529 530	ECST1AY106R	CAPACITOR, 10V, 10 μ F	8
CA 1 2	DEAAC101K50K	CAPACITOR ARRAY, 16V, 100P	2
CN 1 2 6	FH12-50S05SV	CONNECTOR, HDD, KEYBOARD, LCD/INVP	3
CN 3	K1MME4B00012	CONNECTOR, FOR RAM CARD	1
CN 4	DFJP050ZA002	CONNECTOR, FOR RTC BATTERY	1
CN 5	DFJP083XA100	CONNECTOR, FOR FDD CONNECTOR PCB	1
CN 7	7734P-09G2	CONNECTOR, EXT. DISPLAY PORT	1
CN 8	DFJP129YA144	CONNECTOR, FOR PC CARD SLOT	1
CN 10	DFJP131ZA040	CONNECTOR, FOR PARALLEL/SERIAL PC	1
CN 11	DFJS262ZA006	CONNECTOR, EXT. KEYBOARD/MOUSE	1
CN 12 14	DFJP050ZA002	CONNECTOR, FOR SPEAKER	2
CN 13	DFJP142ZA080	CONNECTOR, FOR PORT REPLICATOR	1
CN 15	DFJP144ZA013	CONNECTOR, FOR IrDA PCB	1
CN 16	DFJS345ZA004	CONNECTOR, USB PORT	1
CN 17	DFJP084YA010	CONNECTOR, FOR BATTERY	1
CN 18	DFJP143YA120	CONNECTOR, WIRELESS MODEM	1
CN 19	DFJP143YA060	CONNECTOR, FOR ROMJIGU	1

CN 20	DFJS085YA008	CONNECTOR, FOR WIRELESS MODEM SW	1
CN 23	K1KA03A00159	CONNECTOR, FOR MIC	1
CN 24	DFJS365ZA016	CONNECTOR, FOR TESTER	1
D 2 4 5 6 60 62	MA729-TX	DIODE	6
D 8	DEDAFPA73V	DIODE	1
D 9 11 29 30 40	DEDRB715FT7	DIODE	5
D 17	DEDUDZ9R1BT	DIODE	1
D 19 20	DEDRB081L20	DIODE	2
D 21	DEDUDZ18BT	DIODE	1
D 23	DEDUDZ6R2BT	DIODE	1
D 24	DEDUDZ5R1BT	DIODE	1
D 26	DED03P2JT1-D	DIODE	1
D 27 28 32 34	DEDFS1J3TP	DIODE	4
D 33	DAP222TL	DIODE	1
D 35	DEDAP202UT7	DIODE	1
D 51	DEDUDZ4R7BT	DIODE	1
F 1	△XBADMMCT030U	FUSE(3A)	1
F 2	△XBAD4516R30L	FUSE(6.3A)	1
F 3	△XBADMMCT010U	FUSE(1A)	1
IC 2	DAC1735CGNXU	IC, SET-UP REGULATOR	1
IC 5	DA7SH32U85L0	IC, OR GATE	1
IC 6	DA710GX04X3U	IC, VGA	1
IC 7	DA7ST08U85L0	IC, AND GATE	1
IC 8	DA7ST08U85L0	IC, AND GATE	1
IC 9	DARB5C4782BR	IC, PCMCIA CONTROLLER	1
IC 13 14	DA7S02UT85L0	IC, NOR GATE	2
IC 15 69	DA7W74UT12L0	IC, D-FF GATE	2
IC 16	DAM2370R121P	IC, UP CONVERTER	1
IC 17 115 117 118	DA7S32UT85L0	IC, OR GATE	4
IC 19	DA17431VLELH	IC, REGULATOR	1
IC 20	DAF3434T000H	IC, EC	1
IC 21 63 106	DA7S14UT85L0	IC, INVERTER GATE	3
IC 23 121	DA7S04UT85L0	IC, INVERTER GATE	2
IC 26 45 101 120 123	DA7SH08U85L0	IC, AND GATE	5
IC 30	XC62FP2502PR	IC, REGULATOR	1
IC 31	DA1021ARQX1P	IC, SYSTEM TEMPERATURE MONITOR	1
IC 32	DAB664ETBX3A	IC, CLOCK BUFFER	1
IC 33	DAW82443BXCI	IC, 443BX	1
IC 34	DA9714DYBX3A	IC, CLOCK	1
IC 35 37 39 41 80 81 82 83	C3ABQG000025	IC, SDRAM	8
IC 43	DAFW82371M-I	IC, PIIX4M	1
IC 46	DA2563A1SX2V	IC, PCMCIA POWER	1
IC 47	DA97338VJA2N	IC, SUPER I/O	1
IC 48	MAX211CAI-M	IC, SERIAL DRIVE	1
IC 50	C1DB00000512	IC, SOUND AMP	1
IC 51	DA7787FSE2E	IC, AMP	1
IC 52	DAM2904MT1-P	IC, OP AMP	1
IC 53	DALP298050N	IC, REGULATOR	1
IC 54	DAPST9140NXT	IC, RESET	1
IC 55 56	DAPST9125NXT	IC, RESET	2

IC 57 58	DA7W14UT12L0	IC, INVERTER GATE	2
IC 59	DA29LV0409FJ	IC, BIOS	1
IC 62	DA7W02UT12L0	IC, NOR GATE	1
IC 66	DAM2119MT1-P	IC, OP AMP	1
IC 67	DA16114FPTH	IC, CHARGER	1
IC 68	DALP298030N	IC, REGULATOR	1
IC 72	DA32XL384Q1U	IC, QUICK SW	1
IC 73	DAC63M63AX3H	IC, LVDS	1
IC 74	DA3053PT-X2X	IC, SET-UP REGULATOR	1
IC 110	DACBT3306PWT	IC, QUICK SW	1
IC 111 133	DA7W66UT12L0	IC, ANALOG SW	2
IC 112 122 134	DA7ST04U85L0	IC, INVERTER	3
IC 113	DA16C750PM-T	IC, SERIAL CONTROLLER	1
IC 116	DARN5RL43AR	IC, REGULATOR	1
IC 119	DA7SH08U85L0	IC, AND GATE	1
IC 131	C0DBEZG00006	IC, REGULATOR	1
IC 132	DA7S08UT85L0	IC, AND GATE	1
JK 1	DFJJD5S08ZAH	JACK, MICROPHONE	1
JK 2	DFJJD8S09ZAH	JACK, HEADPHONE	1
JK 3	DFJJB3Z07ZAH	JACK, DC-IN	1
L 2	ETQP6F1R3LFA	CHOKE COIL, 4.92m Ω	1
L 5 24	DDB5Z031J-L	FERRITE BEAD	2
L 23 37 49	DDB5Z031J-L	FERRITE BEAD	3
L 33 34 35 36 47 48	DDB5Z024E-L	FERRITE BEAD	6
L 53	DDB5Z028C-L	FERRITE BEAD	1
L 54	DDAZS100LTZ3	CHOKE COIL	1
L 55 56 60 72 96 97 98 99	DDB5Z005-L	FERRITE BEAD	8
L 57 58	DDAZS100MTZ8	CHOKE COIL	2
L 63 64	DDB5Z021C-Y	FERRITE BEAD	2
L 70 71	DDB5Z021C-Y	FERRITE BEAD	2
L 80 93 95 100	DDB5Z005-L	FERRITE BEAD	4
L 81 82 83 84	DDB5Z021G-Y	FERRITE BEAD	4
L 85 86 87 88	DDB5Z021G-Y	FERRITE BEAD	4
L 90	DDAZR4R7KT2L	INDUCTANCE	1
LA 1 2	EXBV8VR000V	RESISTOR ARRAY, 0 Ω	2
PS 1 4	Δ ERY32SA120VA	POLY AWITCH, 1.2A	2
PS 2 3	Δ ERY32SA120VA	POLY SWITCH, 1.2A	2
Q 1 4	DAFDS6670A	FET	2
Q 3	DAFDS6690A	FET	1
Q 8 14 91	DETC114YETL	TRANSISTOR	3
Q 9 15	DETA114EETL	TRANSISTOR	2
Q 12 42 43 63 69 70 102	DETA144EETL	TRANSISTOR	7
Q 13 19 40 41 60 73 90 111	DETC114YETL	TRANSISTOR	8
Q 16	DAIRF7413	FET	1
Q 20	DAIRF7416	TRANSISTOR	1
Q 21	DETC114EETL	TRANSISTOR	1
Q 22	DETA114EETL	TRANSISTOR	1
Q 23	2SJ187TD	TRANSISTOR	1
Q 46 48	DAFDS6912A	TRANSISTOR	2
Q 50 51 52 53 54 59 68 71 100	DETC144EETL	TRANSISTOR	9

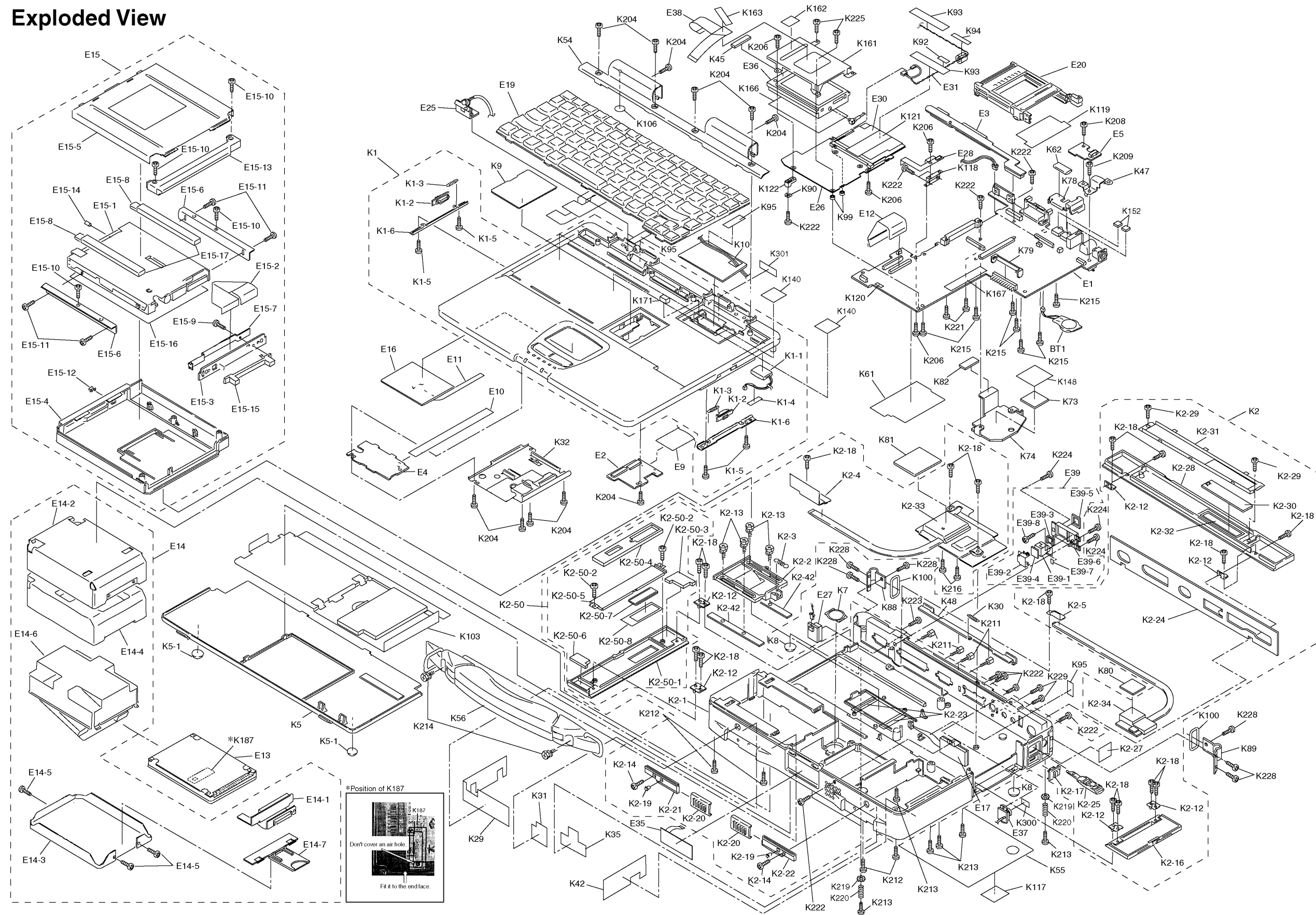
Q 61	DETUMG2NTR	TRANSISTOR	1
Q 62 65 67	DAIRF7416	FET	3
Q 64 110	2SK3019TL	TRANSISTOR	2
Q 66	DETUMC2NTR	TRANSISTOR	1
Q 72	IRF7205ATR	FET	1
Q 75	DETUMC2NTR	TRANSISTOR	1
Q 77 79	DAFDS6912A	FET	2
Q 85	DA3LN01STL	FET	1
Q 92	DAFDN338P	FET	1
R 5 6 36	ERJ3EKF56R2V	RESISTOR, 1/16W, 56.2 Ω	3
R 7 19 581	ERJ3GEYJ152V	RESISTOR, 1/16W, 1.5K Ω	3
R 8	ERA3YED152V	RESISTOR, 1/16W, 1.5K Ω	1
R 17	ERJ3GEYJ681V	RESISTOR, 1/16W, 680 Ω	1
R 21 44 88 91 95 100 117 127 177 281 282 345 346 399 421 422 450 451	ERJ3GEYJ102V	RESISTOR, 1/16W, 1K Ω	18
R 24 27 28 31 35 43 46 154 179 181 186 187 193 194 205 302 303 348 359 380 409 424 425 432 467 514 541 542 543 544 545 546 547 548 550 551 552 553 554 555 556 557 558 559 560 580	ERJ3GEYJ103V	RESISTOR, 1/16W, 10K Ω	46
R 25 34 130 307 1001	ERJ3GEYJ102V	RESISTOR, 1/16W, 1K Ω	5
R 32	ERJ3GEYJ271V	RESISTOR, 1/16W, 270 Ω	1
R 33 37	ERA3YED202V	RESISTOR, 1/16W, 2K Ω	2
R 39 51 463 464 503	ERA3YED102V	RESISTOR, 1/16W, 1K Ω	5
R 41	ERJ3GEYJ511V	RESISTOR, 1/16W, 510 Ω	1
R 42 52 104 107 110 113 132 180 257 259 291 306 325 353 354 419 426 428	ERJ3GEYJ103V	RESISTOR, 1/16W, 10K Ω	18
R 45 164 441 472	ERJ3GEYJ562V	RESISTOR, 1/16W, 5.6K Ω	4
R 48 68 71 74 79 80 81 97 116 133 140 147 149 151 156 173 178 202 212 234 381 499 577 586	ERJ3GEY0R00V	RESISTOR, 1/16W, 0 Ω	24
R 50 561 562 563 564 565 566 567 568	ERJ3GEYJ152V	RESISTOR, 1/16W, 1.5K Ω	9
R 53 56	ERJ3GEYJ151V	RESISTOR, 1/16W, 150 Ω	2
R 54 460	ERA3YED202V	RESISTOR, 1/16W, 2K Ω	2
R 60 404 412 468	ERJ3GEYJ474V	RESISTOR, 1/16W, 470K Ω	4
R 61 121 182 188 189 191 192 195 197 215 217 219 221 235 337 355 358 395 396 414 415 434 436 438 440 456 459 569 570 571 572	ERJ3GEYJ473V	RESISTOR, 1/16W, 47K Ω	31
R 62 218 224 226	DBJ14RR033VM	RESISTOR, 1/4W, 0.033 Ω	4
R 63	ERA3YED273V	RESISTOR, 1/16W, 27K Ω	1
R 64 65 69	DBJ14RR022VM	RESISTOR, 1/4W, 0.022 Ω	3
R 70	ERA3YKD393V	RESISTOR, 1/16W, 39K Ω	1
R 72 238	DBJ14RR047VM	RESISTOR, 1/4W, 0.047 Ω	2
R 76	ERA3YED751V	RESISTOR, 1/16W, 750 Ω	1
R 78 142 263 423	ERJ3GEY0R00V	RESISTOR, 1/16W, 0 Ω	4

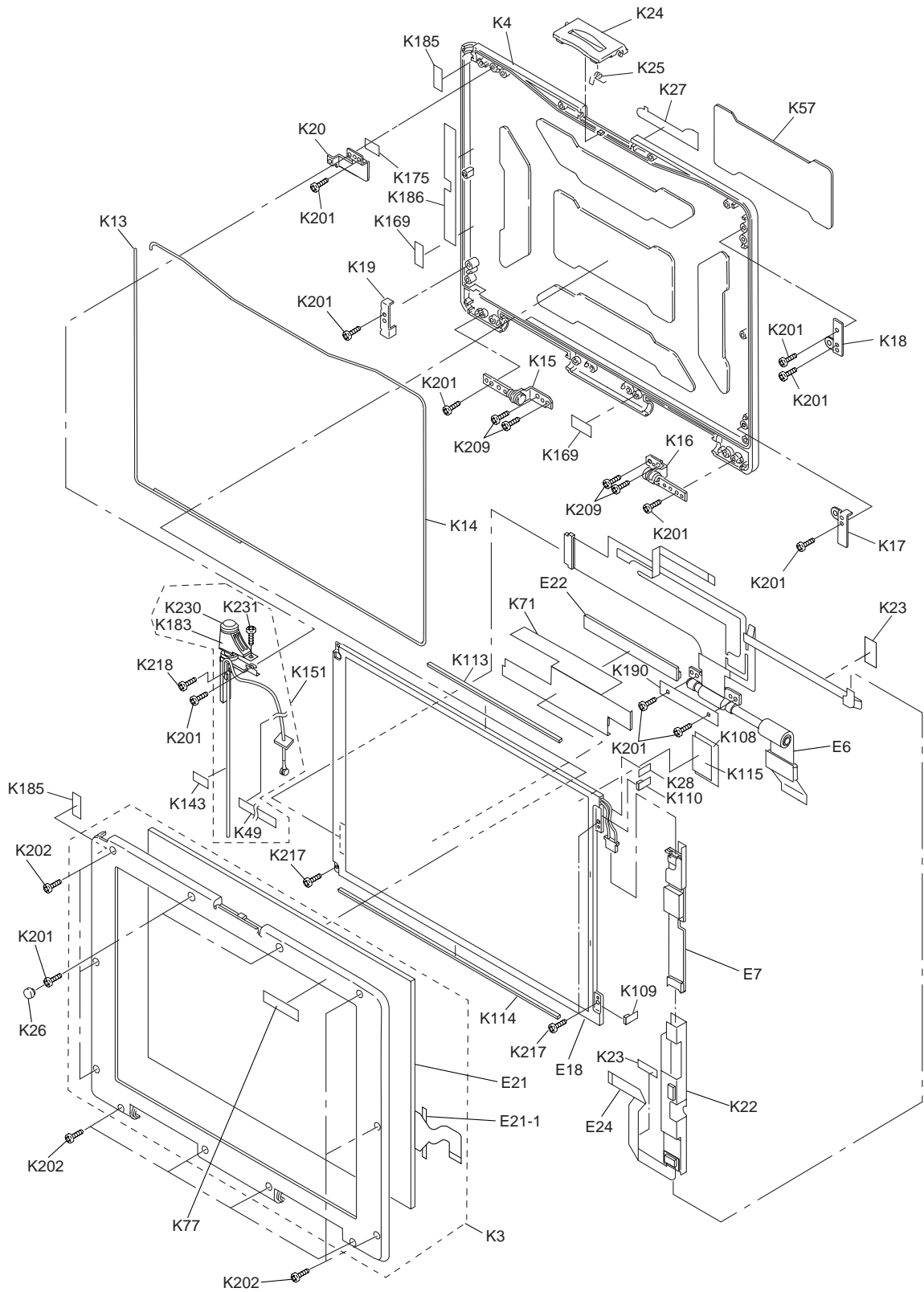
R 83 84	ERJ6GEY0R00V	RESISTOR,1/10W,0Ω	2
R 92 172 174 176 272 343 402 405 413 417 418 420	ERJ3GEYJ101V	RESISTOR,1/16W,100Ω	12
R 103 105 106 108 109 111 112 114	DDB5Z030J-D	FERRITE BEAD	8
R 115 427 475 476	ERJ3GEYJ104V	RESISTOR, 1/16W, 100KΩ	4
R 118	ERJ6GEY0R00V	RESISTOR, 1/16W, 0Ω	1
R 129 170	ERJ3GEYJ104V	RESISTOR,1/16W,100KΩ	2
R 131 135 144 150 184	ERJ3GEYJ333V	RESISTOR,1/16W,33KΩ	5
R 157 158	ERJ3GEYJ511V	RESISTOR,1/16W,510Ω	2
R 160 437 584 585	ERJ3GEYJ223V	RESISTOR,1/16W,22KΩ	4
R 161 201 439 444 445 448 449 582 583	ERJ3GEYJ105V	RESISTOR,1/16W,100KΩ	9
R 166 167 168	DDB5Z034A-Y	FERRITE BEAD	3
R 190	ERJ3GEYJ271V	RESISTOR,1/16W,270Ω	1
R 196 209 326 435	ERJ3GEYJ222V	RESISTOR,1/16W,2.2KΩ	4
R 198 332	ERA3YED392V	RESISTOR, 1/16W, 3.9KΩ	2
R 200	ERJ3GEYJ391V	RESISTOR,1/16W,390Ω	1
R 214	ERA3YED203V	RESISTOR, 1/16W, 20KΩ	1
R 216 220 455	ERA3YED333V	RESISTOR, 1/16W, 33KΩ	3
R 237 502	ERJ3GEYJ100V	RESISTOR,1/16W,10Ω	2
R 240	ERA3YKD104V	RESISTOR,1/16W,100KΩ	1
R 262 323 324	ERJ3GEYJ105V	RESISTOR, 1/16W, 1MΩ	3
R 271	ERJ3GEYJ106V	RESISTOR, 1/16W, 10MΩ	1
R 273	ERJ3GEYJ154V	RESISTOR, 1/16W, 150KΩ	1
R 277 278 279 280 493 494 495 496 497 498	ERJ3GEYJ330V	RESISTOR, 1/16W, 33Ω	10
R 297 298 299 300	ERJ3GEYJ153V	RESISTOR, 1/16W, 15KΩ	4
R 293 294 295 296	ERJ3GEYJ270V	RESISTOR, 1/16W, 27Ω	4
R 304 305 490	ERJ3GEYJ100V	RESISTOR, 1/16W, 10Ω	3
R 308 473	ERJ3GEYJ562V	RESISTOR, 1/16W, 5.6KΩ	2
R 309 310	ERJ3GEYJ220V	RESISTOR, 1/16W, 22Ω	2
R 311 491	ERJ3GEYJ180V	RESISTOR, 1/16W, 18Ω	2
R 316 478	DDB5Z034B-Y	FERRITE BEAD	
R 327 329 330	ERJ6ENF75R0V	RESISTOR,1/10W,75Ω	3
R 328 331 403 410	ERJ3GEYJ222V	RESISTOR, 1/16W, 2.2KΩ	4
R 333 336 388 389 429 573 574 575 576	ERJ3GEYJ473V	RESISTOR, 1/16W, 47KΩ	9
R 335 387	DBT10KC1513P	THERMISTER	2
R 342	ERJ6GEYJ120V	RESISTOR,1/10W,12Ω	1
R 356 357	ERJ3GEYJ101V	RESISTOR, 1/16W, 100Ω	2
R 385	ERJ3GEYJ472V	RESISTOR,1/16W,4.7KΩ	1
R 386	ERJ3GEYJ471V	RESISTOR,1/16W,470Ω	1
R 390 392	ERJ3GEYJ221V	RESISTOR,1/16W,220Ω	2
R 394	ERJ3GEYJ471V	RESISTOR, 1/16W, 470Ω	1
R 400	ERJ3GEYJ683V	RESISTOR, 1/16W, 68KΩ	1
R 401	ERJ3GEYJ3R3V	RESISTOR, 1/16W, 3.3Ω	1
R 406 416	ERJ3GEYJ224V	RESISTOR,1/16W,220KΩ	2
R 407	ERJ3GEYJ274V	RESISTOR,1/16W,270KΩ	1
R 433 452 454	ERA3YED752V	RESISTOR, 1/16W, 7.5KΩ	3
R 446 447	ERJ3GEYJ564V	RESISTOR,1/16W,560KΩ	2

R 453	ERA3YKD204V	RESISTOR, 1/16W, 200K Ω	1
R 457	ERA3YED911V	RESISTOR, 1/16W, 910 Ω	1
R 458 459	ERA3YKD683V	RESISTOR, 1/16W, 68K Ω	2
R 461 462 465	DBJ8GF0R10VM	RESISTOR, 1/4W, 0.1 Ω	3
R 466	ERA3YED103V	RESISTOR, 1/16W, 10K Ω	1
R 469 470 474	ERJ6GEYJ222V	RESISTOR, 1/10W, 2.2K Ω	3
R 471	ERJ3GEYJ273V	RESISTOR, 1/16W, 27K Ω	1
R 477	ERJ3GEYJ472V	RESISTOR, 1/16W, 4.7K Ω	1
R 492	ERJ3GEYJ150V	RESISTOR, 1/16W, 15 Ω	1
R 500	ERJ3GEYJ180V	RESISTOR, 1/16W, 18 Ω	1
R 501	ERJ3EKF1100V	RESISTOR, 1/16W, 110 Ω	1
R 504	ERA3EED4991V	RESISTOR, 1/16W, 4990 Ω	1
RA 42 43 45 62	EXBV8V100JV	RESISTOR ARRAY, 10 Ω	4
RA 44	EXBV8V100JV	RESISTOR ARRAY, 10 Ω	1
RA 63 112 115 142	EXBV8V473JV	RESISTOR ARRAY, 47K Ω	4
RA 64	EXBV8V271JV	RESISTOR ARRAY, 270 Ω	1
RA 66 120 143 144 145	EXBV8V104JV	RESISTOR ARRAY, 100K Ω	5
RA 70 130	EXBV8V102JV	RESISTOR ARRAY, 1K Ω	2
RA 71 72 73	EXBV8V220JV	RESISTOR ARRAY, 22 Ω	3
RA 74 75 80 83	DEARA8AJ103M	RESISTOR ARRAY, 10K Ω	4
RA 76 77 79 81 82	DEARA8AJ103M	RESISTOR ARRAY, 10K Ω	5
RA 78 86 113	EXBV8V103JV	RESISTOR ARRAY, 10K Ω	3
RA 121	DEARA8CJ330M	RESISTOR ARRAY, 33 Ω	1
RA 133	EXBV8V102JV	RESISTOR ARRAY, 1K Ω	1
RA 134 135 136 137 138 139 140 141	DEARA8CJ180M	RESISTOR ARRAY, 18 Ω	8
SW 1	EVQPSD02K	SW, RESET	1
SW 2	ESD165236	SLIDE SWITCH	1
X 1	DECU14318L5U	OSCILLATOR (14.318MHz)	1
X 2	DECU00032M1D	OSCILLATOR (32.768KHz)	1
X 5	DEBI8R00N1LX	OSCILLATOR (8.00MHz)	1
X 6	H0J491500005	OSCILLATOR (49.152MHz)	1
X 7	DECU01843P2U	OSCILLATOR (1.8432MHz)	1
Keyboard PCB			
C 658	ECUV1C104ZFB	CAPACITOR, 16V, 0.1 μ F	1
C 660 661 662 663	ECUV1H470JCV	CAPACITOR, 50V, 47pF	4
CN 651	DFJS207ZA020	CONNECTOR, FOR LED PCB	1
CN 652	DFJS13N24ZAJ	CONNECTOR, FOR KEYBOARD	1
CN 653	DFJS209ZA016	CONNECTOR, FOR KEYBOARD	1
CN 654	DFJS265ZA012	CONNECTOR, FOR TOUCH PAD	1
CN 655	DFJS317ZA050	CONNECTOR, FOR MAIN PCB	1
IC 650	DA38813E100M	IC, KBC	1
Q 650 651 652 653	DETA114EETL	TRANSISTOR	4
R 654 655 660 661	ERJ3GEYJ103V	RESISTOR, 1/16W, 10k Ω	4
RA 650	EXBV8V331JV	RESISTOR ARRAY, 330 Ω	1
RA 653	EXBV8V330JV	RESISTOR ARRAY, 33 Ω	1
RA 654	EXBV8V103JV	RESISTOR ARRAY, 10k Ω	1
RA 655 656	EXBV8VR000V	RESISTOR ARRAY, 0 Ω	2
X 650	DEBI8R00N1LX	OSCILLATOR (8MHz)	1

FDD Connector PCB			
C 760	ECUV1C104ZFB	CAPACITOR, 16V, 0.1 μ F	1
CN 760	DFJS250YA100	CONNECTOR, FOR MAIN PCB	1
CN 761	DFJS013ZA026	CONNECTOR, FOR FDD	1
IC 760	DA7S04UT85L0	IC, INVERTER GATE	1
Parallel Serial PCB			
C 700 701 702 703 704 705 706 707 708 709 710 711 712 715 716	ECUV1H221JCV	CAPACITOR, 50V, 220pF	15
C 713 714	ECUV1H681JCV	CAPACITOR, 50V, 680pF	2
CN 700	DFJS315ZA040	CONNECTOR, FOR MAIN PCB	1
CN 701	DFJS296ZA025	CONNECTOR, PARALLEL PORT	1
R 700 705 706 707 709 711 713 715 716	ERJ3GEYJ472V	RESISTOR, 1/16W, 4.7k Ω	9
R 701 702 703 704 708 710 712 714	ERJ3GEYJ102V	RESISTOR, 1/16W, 1k Ω	8
LED PCB			
CN 730	DFJS207ZA020	CONNECTOR, FOR KEYBOARD PCB	1
D 733 734 735 736 737 738	SEC1703C	L.E.D.	6
D739 740	LN2162C-TR	L.E.D.	2
SW 730	EVQPLDA15	SW, TOUCH PAD (LEFT)	1
SW 731	EVQPLDA15	SW, TOUCH PAD (RIGHT)	1
IrDA PCB			
C 770 771	ECUV1C104ZFB	CAPACITOR, 16V, 0.1 μ F	2
C 773	ECST1AD107R	CAPACITOR, 10V, 100 μ F	1
C 774	ECUV1C224ZFB	CAPACITOR, 16V, 0.22 μ F	1
CN 770	DFJS13C66ZA0	CONNECTOR FOR MAIN PCB	1
D 770	DEDRB715FT7	DIODE	1
IC 770	DEDHRM230S	IC, IrDA	1
R 772	ERJ3GEYJ472V	RESISTOR, 1/16W, 4.7k Ω	1
R 774	DBJ8GF1R50VM	RESISTOR, 1/4W, 1.5 Ω	1
R 775 776	ERJ3GEYJ100V	RESISTOR, 1/16W, 10k Ω	2
R 777	ERJ3GEY0R00V	RESISTOR, 1/16W, 0 Ω	1
RJ11 PCB			
CN 10	DFJP02C75YAJ	CONNECTOR	1
CN 11	DFJP238ZA002	CONNECTOR	1
L 4 5	J0JBC0000023	FERRITE BEAD	2

Exploded View





CF-27LBEKQCM