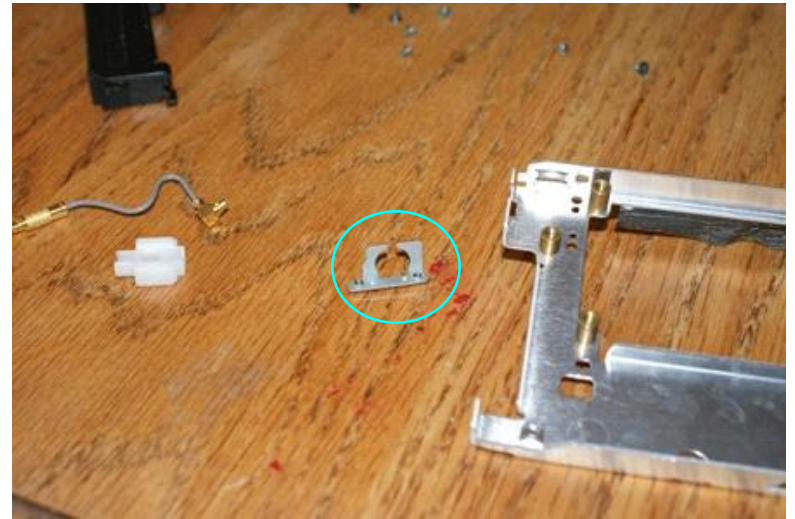
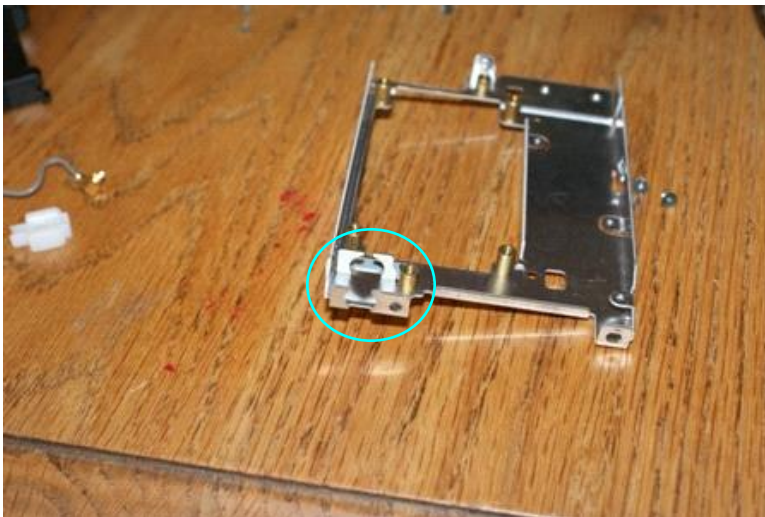


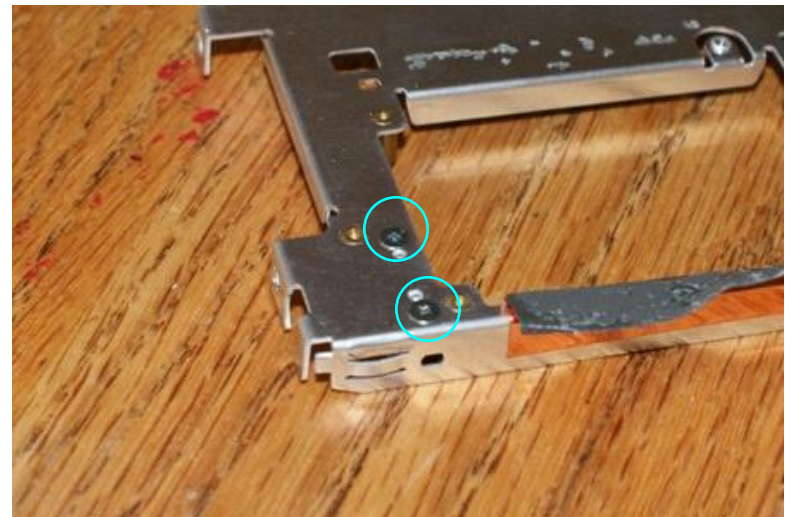
First step is to grab these parts



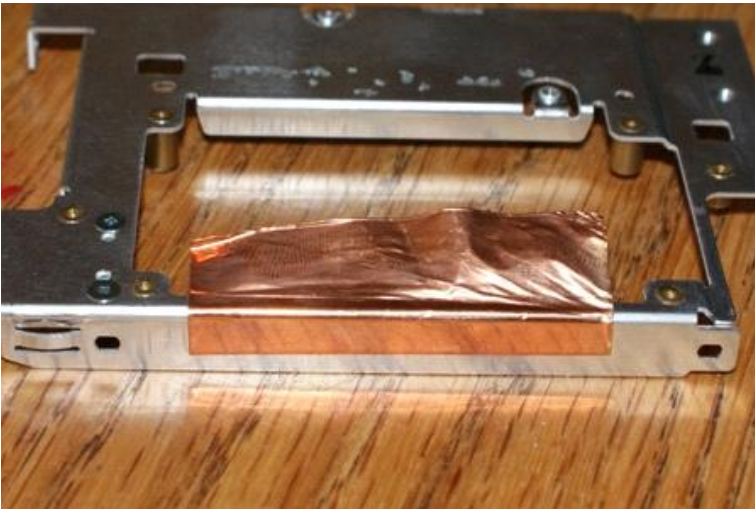
You will need this metal piece first



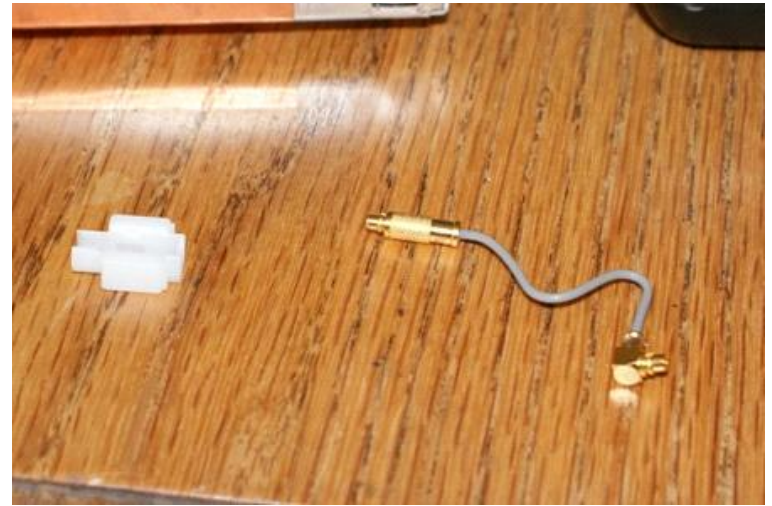
Attach it to the sled here



It screws from the underside here



Attach half of your gold foil here



Then grab these two pieces, one cable one plastic



Snap the cable into the plastic piece



Attach the first sticky pad to the modem



Flip modem back over



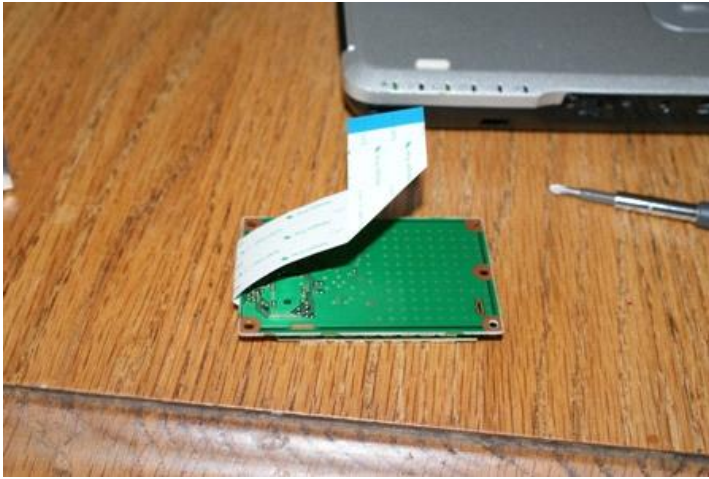
Now grab your ribbon cable and fold like so



It will attach to the modem here



Make sure the fold goes down



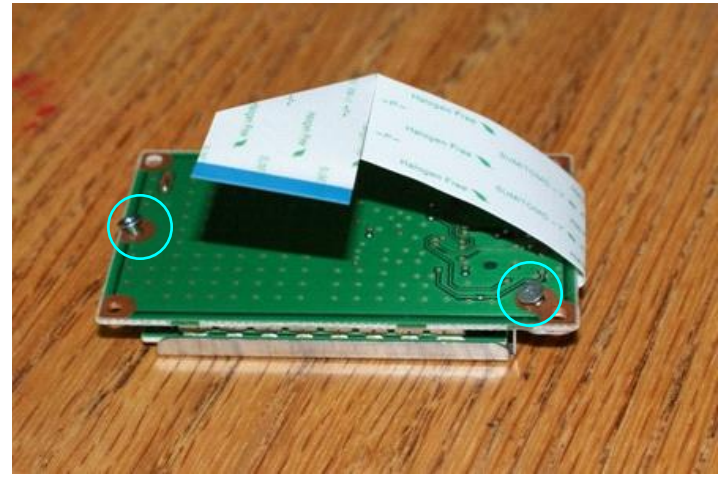
It will then tuck and fold up



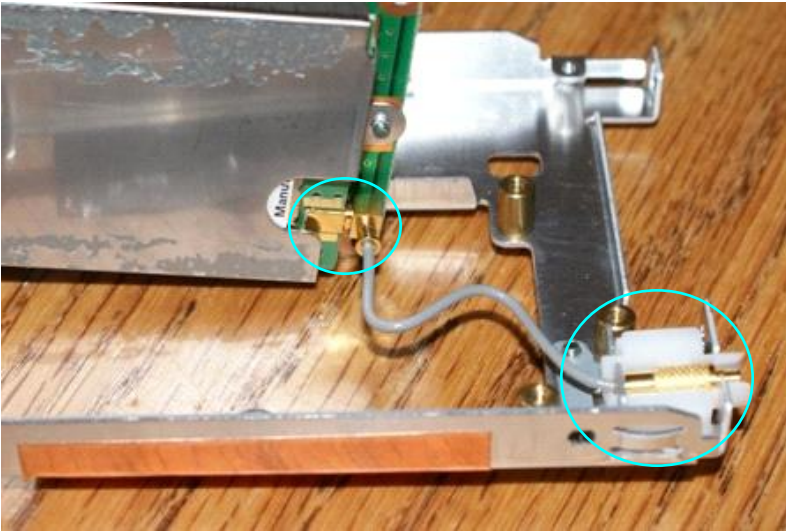
Next you need the cover plate



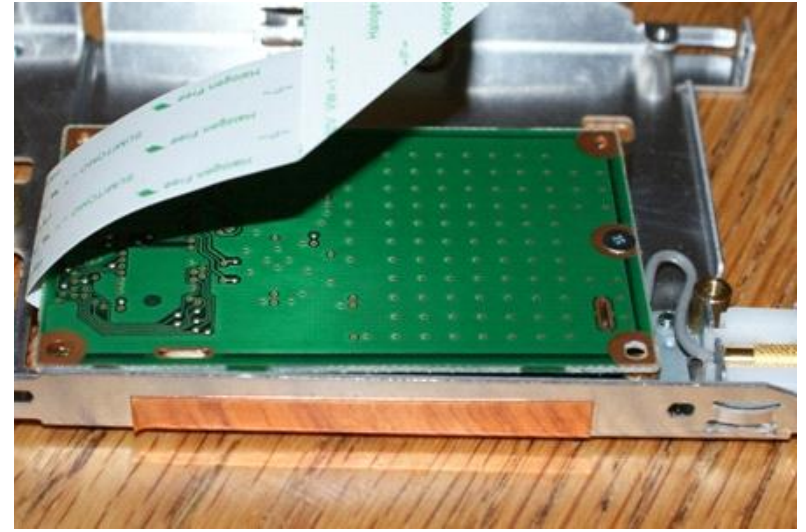
It attaches over the modem label



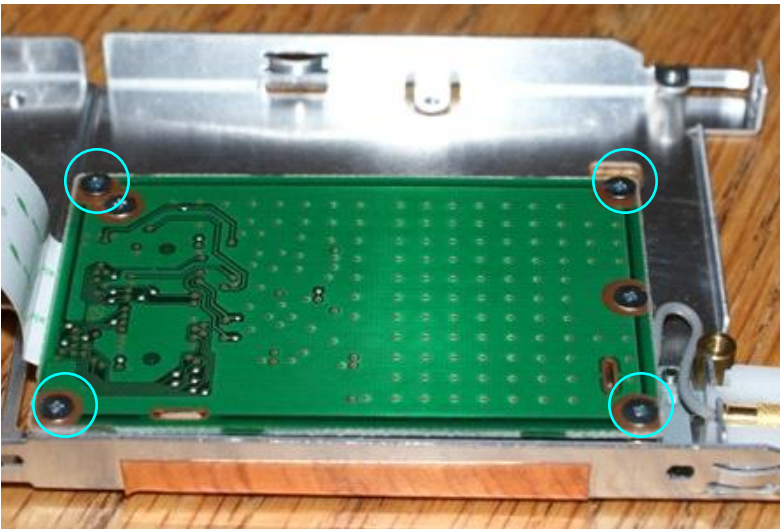
It will hold in place via two screws underneath



Next attach your cable and plastic piece here and
Then attach it to the modem



Lay your modem in place



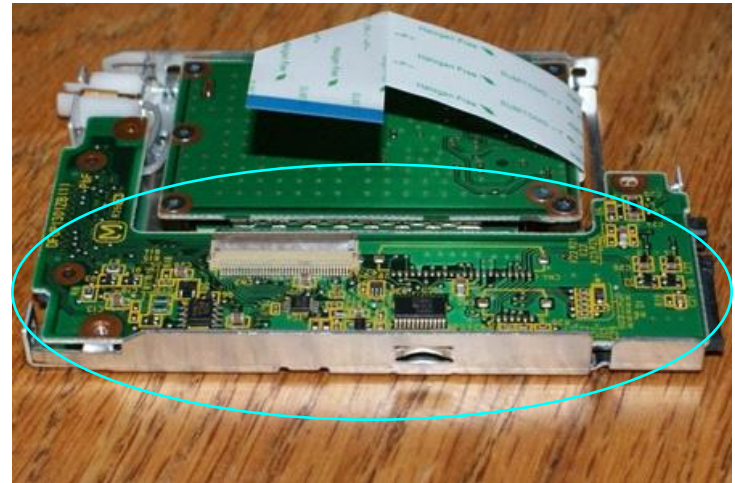
Tighten down these four screws



Flip it over and attach gold foil tape



Attach other half of gold foil tape here



Flip over and place long PCB in place



Tighten down two screws here



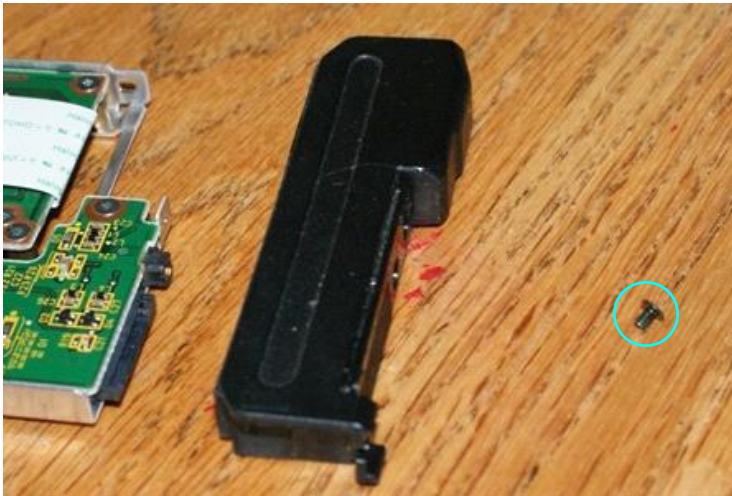
And one screw here..



Now you're ready to insert the cable



This is how it looks properly seated



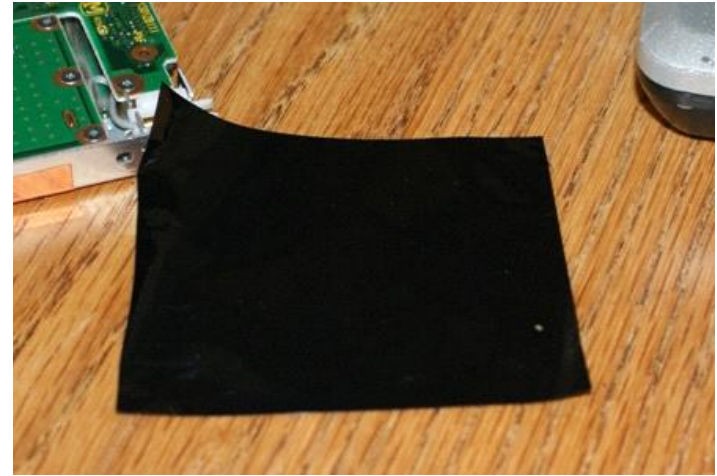
Next comes the end cap, only one screw here



First slide the end cap on securely



Then insert and tighten the center screw



Next is the big black square tape thing..
Yours may be odd shaped and not square



It attaches to the top, where the ribbon cable
Is showing to protect the top



Last would be this piece, not all have it though,
Simply snap it into place after the sled is securely
In the laptop. Then hold all in place by these two
Screw holes.



Inside the laptop are these additional pieces.. There is actually two more that I didn't have to take pics Of, one is a small long black cable that attaches here, The other is the on/off switch that mounts on the front Of the laptop where the black cable terminates.



This is the vague arrangement inside the laptop. The three pieces are all mounted inside, then the Sled slides into them to hold in place.